

Hawkesdale Wind Farm

Weekly Construction Report

January 29, 2024

General:

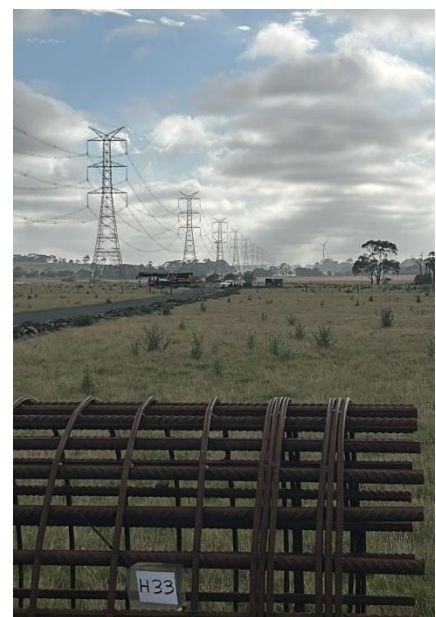
The turbines are going up at a steady rate. 18 have been fully erected, only 5 more to go. The pleasant weather, free of gusty wind and thunderstorms means the work can be completed on time with few delays.



Access tracks and turbine erection:

All turbines have been completed on South side of Woolsthorpe-Heywood road. And the main crane was shifted back to the north east side of the wind farm.

Pre-commissioning of the wind turbines before energisation has commenced with technicians carrying out operational checks as part of the quality systems.



Connections assets:

The transmission line access tracks are continuing along to Tarrone terminal station. Hardstands for the cranes and the poles and stringing are also being formed along the line. 10 foundations have been poured.

Construction of the on site substation is progressing smoothly and the fence line is being surveyed for construction next week.

Hawkesdale Asset Trust

Phone: 0428 867 646 (Debra Dumesny – Community and Stakeholder Engagement)

Email: hawkesdalewindfarm@globalpower-generation.com.au or debra.dumesny@globalpower-generation.com.au

Website: www.hawkesdalewindfarm.com.au

Mail: Hawkesdale Asset Trust, Suite A, Level 3, 73 Northbourne Avenue, Canberra ACT 2601