

Hawkesdale Wind Farm

Hawkesdale Asset Trust Pty Ltd

August 2023 Newsletter

Phone: 0428 867 646

E-mails:

debra.dumesny@globalpower-generation.com.au

hawkesdalewindfarm@globalpower-generation.com.au

Website:

<https://hawkesdalewindfarm.globalpower-generation.com.au/>

Mail: Hawkesdale Asset Pty Ltd

Suite A, Level 3, 73 Northbourne Avenue, Canberra ACT 2601

Hawkesdale Wind Farm

Project Update

- Planning permit 20060221-2 has been extended to 31 December 2024
- All the components (blades, nacelles, hubs and rotors) are being transported from Portland to Hawkesdale

Activities On Site

- 20 turbine foundations have been poured, all of these are backfilled.
- Geo-technical investigations and surveys have been completed on the north east section.
- Construction of access tracks continues with approximately 80% trafficable.
- 28 km of interconnection cables have been laid.
- The substation bench has been completed.
- Components on site 5 nacelles, 8 tower sections, 3 blades, 2 hubs.
- Vestas has mobilised to site, their site compound has been completed.



Weekly Construction Updates

Weekly construction updates are available on the Hawkesdale web site from early February, follow the link: [Hawkesdale Wind Farm Progress - Global Power Generation \(globalpower-generation.com.au\)](https://www.globalpower-generation.com.au/hawkesdale-wind-farm-progress).



Hawkesdale Assets Pty Ltd

Phone: 0428 867 646
1800 457 181

E-mail:
debra.dumesny@globalpower-generation.com.au
hawkesdalewindfarm@globalpower-generation.com.au

Website:
<https://hawkesdalewindfarm.globalpower-generation.com.au/>

Mail:
Hawkesdale Assets Pty Ltd,
Suite A, Level 3,
73 Northbourne Avenue,
Canberra ACT 2601

Transmission Line & Tarrone Terminal Station

- ✓ 420MVA, 500kV/132kV Power transformer successfully energized.
- ✓ Installation of the new 500kV and 132kV switch gear successfully energized.
- ✓ CHMP and Native Vegetation Inductions with AusNet and new TxL construction contractor.
- ✓ Finalising property and construction management plans with landowners.

Community Engagement & Benefit Sharing

Community Engagement Committee

The Hawkesdale Wind Farm Community Engagement Committee (CEC) July meeting was held. The next meeting is scheduled for September 2023. Minutes and notes from all CEC meetings are available on the Moyne Shire web site, from CEC members or please contact Debra Dumesny on 0428 867 646 or by email debra.dumesny@globalpower-generation.com.au to request a copy of the minutes/notes.

We encourage you to contact a CEC representative if you wish to bring concerns to the CEC for discussion, or if you would like to be included on the distribution list for the confirmed minutes and updates.

Contact details for your local community members can be found by contacting the Moyne Shire Council.

Hawkesdale Community Benefit Fund (HCBF) - Applications Open

The Hawkesdale Community Benefit Fund (HCBF) is now open for applications. Applications close October 16. All information can be found on the web site at https://hawkesdalewindfarm.globalpower-generation.com.au/sustainability/community/#calls_for_applications.

Applications open	31/08/2023
Information session	12/09/2023 7:00 pm Hawkesdale Memorial Hall
Applications close	16/10/2023 10:00 am
Announcement of successful applicants	24/11/2023

This is a great opportunity to start to realise your plans to ensure Hawkesdale continues to grow and become a sustainable community. There is sure to be some innovative ideas and plans already developing among the community, let's work together to make them a reality.

If you would like any further information, please contact Debra on 0428 867 646 or by email debra.dumesny@globalpower-generation.com.au.

Hawkesdale Assets Pty Ltd

Phone: 0428 867 646
1800 457 181

E-mail: debra.dumesny@globalpower-generation.com.au
hawkesdalewindfarm@globalpower-generation.com.au

Website: <https://hawkesdalewindfarm.globalpower-generation.com.au/>

Mail: Hawkesdale Assets Pty Ltd,
Suite A, Level 3,
73 Northbourne Avenue,
Canberra ACT 2601

Do you know about?

Women in Construction

While construction is still dominated by male employees, it is increasingly becoming an industry that welcomes and respects women in the workplace. Renewable energy is an industry that is well advanced in employment practices that welcome all genders in any roles.

Hawkesdale wind farm and GPG Australia are examples of gender equality in the workplace.

Gemma Rodríguez – Civil Engineer, Hawkesdale wind farm project director leads a team and project that includes women in the roles of community engagement, health and safety, environment, civil construction, turbine installation supervisor, and Kat keeps the site sparkling. The renewable energy sector in Australia that includes project owners along with consultants and contractors has a high percentage of women in their workforce.



Further Information

Complaints Investigation and Response Plan (CIRP)

The CIRP has been endorsed and can be found on our <https://hawkesdalewindfarm.globalpower-generation.com.au/> following the link The Project>Relevant documentation.

Complaints can be made in the following ways:

- ✓ Phone: 1800 457 181 or 0428 867 646
- ✓ E-mail: debra.dumesny@globalpower-generation.com.au
hawkesdalewindfarm@globalpower-generation.com.au
- ✓ Mail: Hawkesdale Asset Trust, Suite A, Level 3, 73 Northbourne Avenue, Canberra ACT 2601

Hawkesdale Assets Pty Ltd

Phone: 0428 867 646
1800 457 181

E-mail: debra.dumesny@globalpower-generation.com.au
hawkesdalewindfarm@globalpower-generation.com.au

Website: <https://hawkesdalewindfarm.globalpower-generation.com.au/>

Mail: Hawkesdale Assets Pty Ltd,
Suite A, Level 3,
73 Northbourne Avenue,
Canberra ACT 2601

Contact Us

Hawkesdale Office

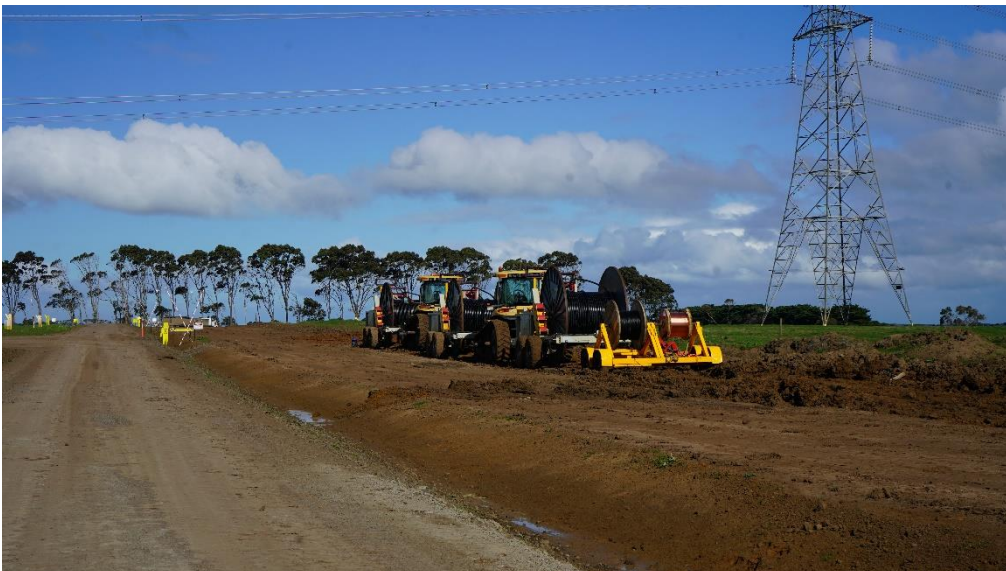
The office at the Hawkesdale Memorial Hall has closed and moved to the site offices at the wind farm.

Contact Debra on 0428 867 646 or by email debra.dumesny@globalpower-generation.com.au



How to be included on the Email List

To be included on the distribution list for our newsletter and updates via email, please contact our Community & Stakeholder Engagement Officer Debra on 0428 867 646 or by email debra.dumesny@globalpower-generation.com.au or hawkesdalewindfarm@globalpower-generation.com.au.



Hawkesdale Assets Pty Ltd

Phone: 0428 867 646
1800 457 181

E-mail:
debra.dumesny@globalpower-generation.com.au
hawkesdalewindfarm@globalpower-generation.com.au

Website:
<https://hawkesdalewindfarm.globalpower-generation.com.au/>

Mail:
Hawkesdale Assets Pty Ltd,
Suite A, Level 3,
73 Northbourne Avenue,
Canberra ACT 2601