

# Hawkesdale Wind Farm

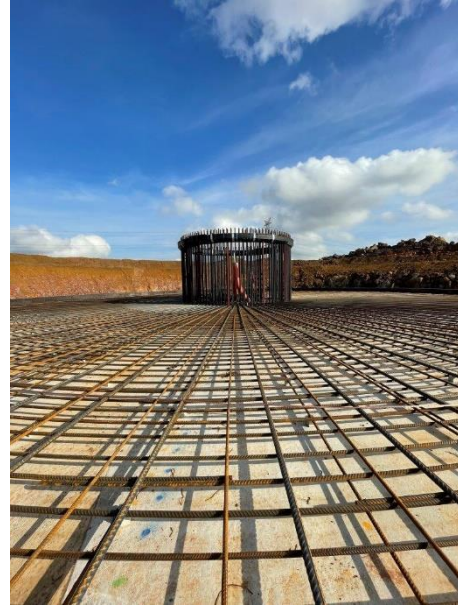
## Weekly Construction Report

April 10, 2023

### General:

Work continues to progress across the site on both the north and south sides.

Sofia Rojas has joined the GPG team as a Health, Safety and Environmental Officer. She is settling into life in the South West and looking forward to supporting the construction team at the wind farm.



### Access tracks and turbine locations:

Excavation has commenced on 20 turbine sites and 17 of the hard stand areas. 11 foundations have had a blinding pour in preparation for the steel fixers to install the anchor cages and reo. A short week has meant there has not been as much progress as other weeks, but a well deserved break.

### Connections:

Trenches will be dug and cables laid alongside the access track between the turbines to send the power generated to the on-site collector substation.

The equipment that will be used for laying the cables is starting to arrive on site.



Hawkesdale Asset Trust

Phone: 0428 867 646 (Debra Dumesny – Community and Stakeholder Engagement)

Email: [hawkesdalewindfarm@globalpower-generation.com.au](mailto:hawkesdalewindfarm@globalpower-generation.com.au) or [debra.dumesny@globalpower-generation.com.au](mailto:debra.dumesny@globalpower-generation.com.au)

Website: [www.hawkesdalewindfarm.com.au](http://www.hawkesdalewindfarm.com.au)

Mail: Hawkesdale Asset Trust, Suite A, Level 3, 73 Northbourne Avenue, Canberra ACT 2601