

# Hawkesdale Wind Farm

## Weekly Construction Report

April 03, 2023

### General:

A good week's progress on the site. A lot of activity on site with approximately 67 workers on site each day. This number includes plant operators, steel fixers, truck drivers, concrete workers and the engineers and office staff.

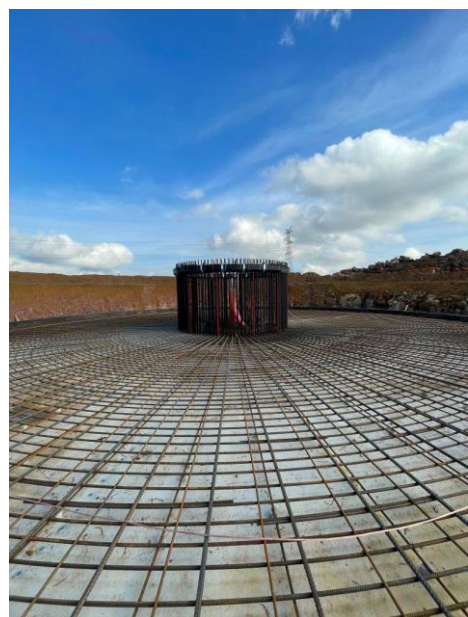


### Access tracks and turbine locations:

Excavation has commenced on 18 turbine sites and 9 of the hard stand areas. The excavation and building of the access tracks is progressing well throughout the site. 8 foundations have had a blinding pour in preparation for the steel fixers to install the anchor cages and reo.

### Farm tracks and water:

A local fencing contractor is busy installing permanent and temporary fences and gates around the site. Washdowns are installed and operational between landowner properties and before vehicles enter the construction area. Stock water is being relocated where necessary in consultation with the landowners.



Hawkesdale Asset Trust

Phone: 0428 867 646 (Debra Dumesny – Community and Stakeholder Engagement)

Email: [hawkesdalewindfarm@globalpower-generation.com.au](mailto:hawkesdalewindfarm@globalpower-generation.com.au) or [debra.dumesny@globalpower-generation.com.au](mailto:debra.dumesny@globalpower-generation.com.au)

Website: [www.hawkesdalewindfarm.com.au](http://www.hawkesdalewindfarm.com.au)

Mail: Hawkesdale Asset Trust, Suite A, Level 3, 73 Northbourne Avenue, Canberra ACT 2601