

Hawkesdale Wind Farm

Weekly Construction Report

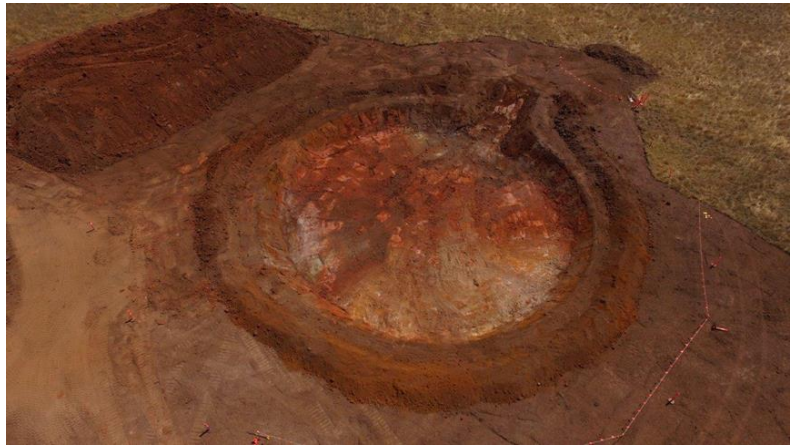
February 13, 2023

General:

Excavation has commenced on 3 foundation locations and preparations are in place for the first foundation pour.

Excavation plant and vehicles continue to arrive along with turbine cages and bolts to be assembled.

CFA and local brigades had a familiarisation visit to site.



Site compound:

The site compound is ready for use. There are some final finishing touches to be completed but the offices and amenities are in full use.

Access tracks:

The access tracks are winding through the site and connecting to the turbine sites.

Farm management:

Permanent and temporary fences and gates are being installed defining the construction corridor.

The Vehicle wash down bay is in place for vehicles entering the construction site. Wash down bays will be installed between properties as needed.

